



Pacific Homes

Building your trust. Building your dream home.



1 800 667 3511 | pacific-homes.com

FLORENCIA Package

GROUND LEVEL:

989 SQ. FT.

UPPER LEVEL:

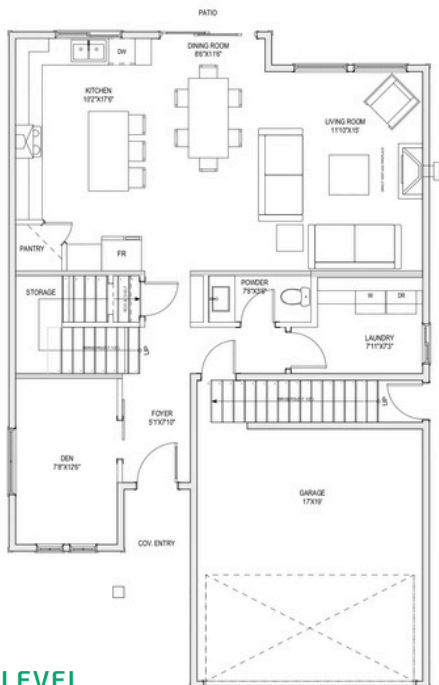
1,276 SQ. FT.

WIDTH: 31'8"

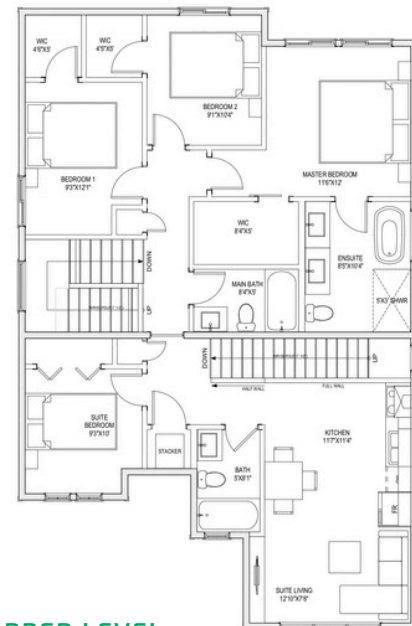
DEPTH: 46'11"



The Florencia Package | A beautifully designed home offering two independent suites. The main floor features an inviting open-concept living area, a versatile den, and an attached garage. Upstairs, enjoy a spacious master bedroom plus two additional bedrooms, each with its own walk-in closet. Charming, functional, and designed for modern lifestyles—this plan is perfect for families who want to live close but independently, or for homeowners looking to enjoy the added value of a rental-ready space.



GROUND LEVEL



UPPER LEVEL

