



# Pacific Homes

Building your trust. Building your dream home.



1 800 667 3511 | pacific-homes.com

## NICHOLAS Package

MAIN FLOOR:  
266 SQ. FT.  
UPPER FLOOR:  
966 SQ. FT.

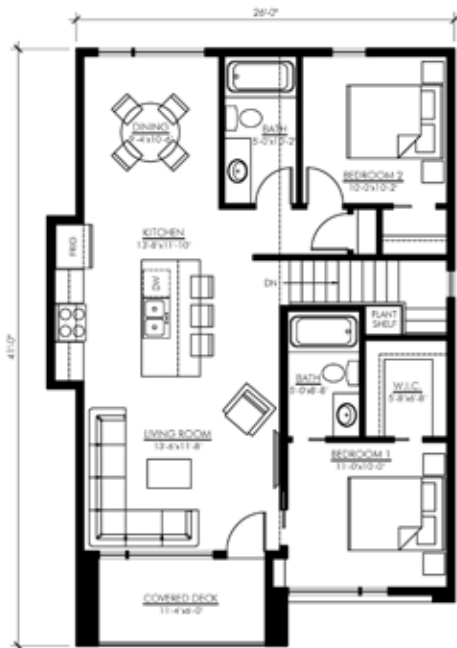
BEDROOMS: 2  
BATHROOMS: 2

WIDTH: 26'  
DEPTH: 41'

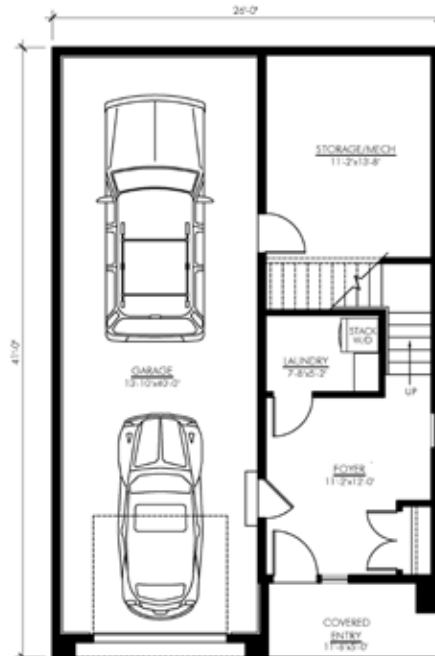


ROBINSON  
RESIDENTIAL  
PERSONALIZING HOME DESIGN

**THE NICHOLAS PACKAGE** | This modern contemporary home plan features a unique upper floor plan that is small yet appears quite open. This compact plan includes an attached garage and provides all the amenities of a large home in an efficiently designed small home. This plan proves that bigger isn't always better!



UPPER FLOOR



MAIN FLOOR