



Pacific Homes

Building your trust. Building your dream home.



1 800 667 3511 | pacific-homes.com

KENAI Package

MAIN FLOOR:
1,264 SQ.FT

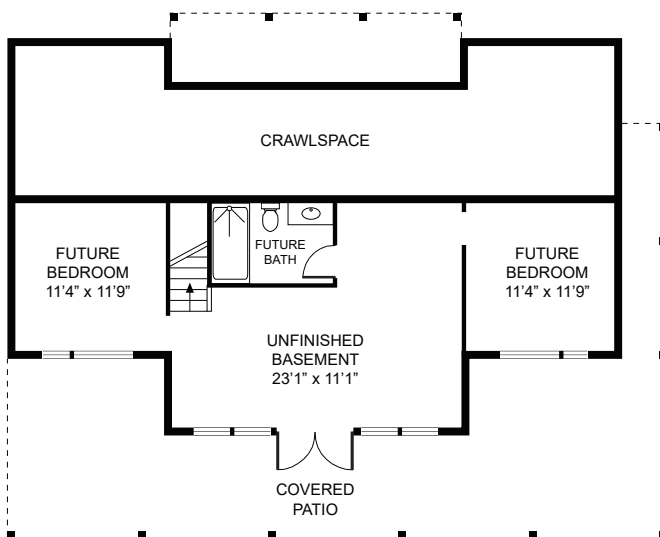
BASEMENT
733 SQ. FT.

DECKS:
767 SQ.FT

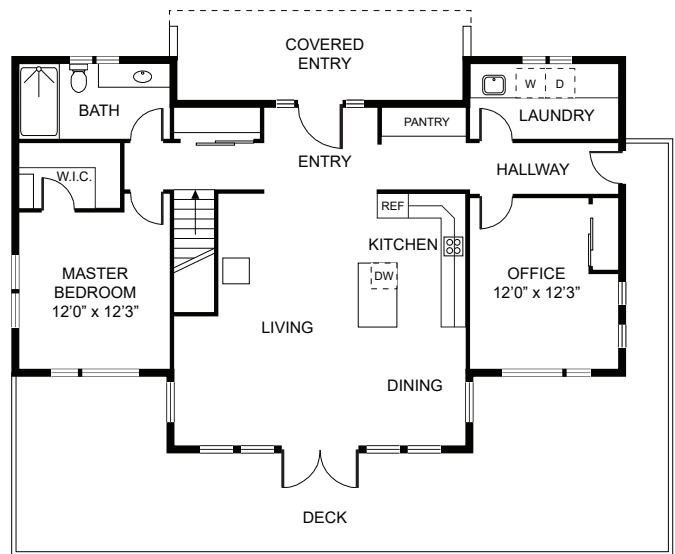
WIDTH: 51' 6"
DEPTH: 31'



THE KENAI PACKAGE | This West Coast modern contemporary design allows inhabitants to live comfortably in a well-designed living environment. Open floor plan with higher ceiling allows continuing daylight to flow into the house. The spacious kitchen is opened to the dining area and great room. Main fireplace is located in the center of living area which serves as a sculptural object creating warm interior feeling. Master bedroom is located separately from the rest of the bedrooms to allow privacy and comfort. Master suit has its own walk in closet, master bathroom and porch for outdoor activities. A office space or extra bedroom and laundry make up the rest of the main floor. The optional basement provides versatility and potential future bedrooms if needed. The focus on this house was to create aesthetically well-designed house which at the same time would be sustainable and energy efficient.



MAIN
FLOOR



UPPER
FLOOR