



Pacific Homes

Building your trust. Building your dream home.



1 800 667 3511 | pacific-homes.com

KENAI Package

MAIN FLOOR:
1,264 SQ.FT

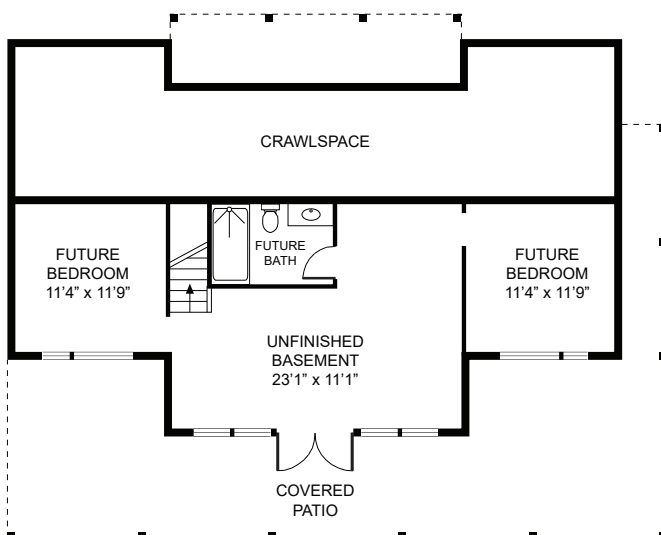
BASEMENT
733 SQ. FT.

DECKS:
767 SQ.FT

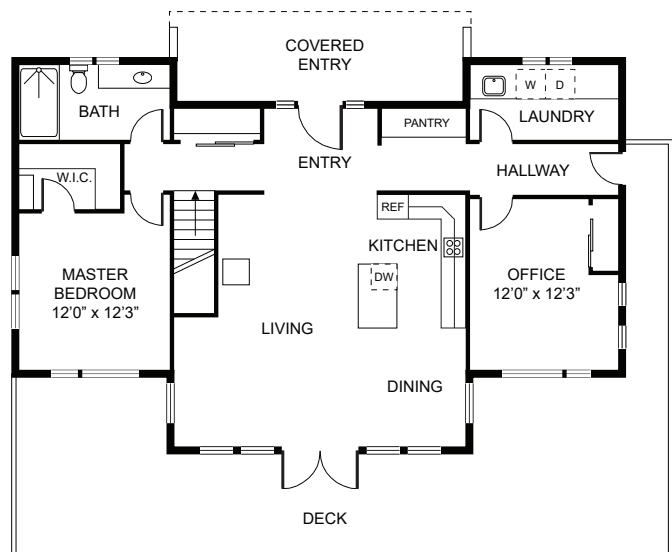
WIDTH: 48'
DEPTH: 25'



THE KENAI PACKAGE | This signature West Coast modern design allows you to live comfortably in a well-designed layout. The open floor plan with higher ceilings allow for more windows which provide an abundance of natural light into the home. The main floor includes a large open foyer that enters into the main living space that includes the a living room, kitchen, & dining room. The two bedrooms on each side of the home offer plenty of space and privacy, from the main living space. The optional basement adds versatility and potential future bedrooms for a growing family.



BASEMENT



MAIN
FLOOR