



Pacific Homes

Building your trust. Building your dream home.



1 800 667 3511 | pacific-homes.com

WEST COAST Package

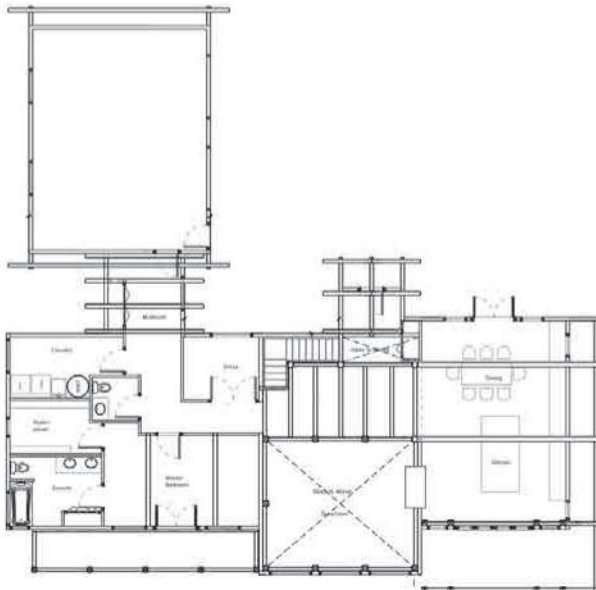
MAIN FLOOR
2,263 SQ FT

LOFT FLOOR
925 SQ FT

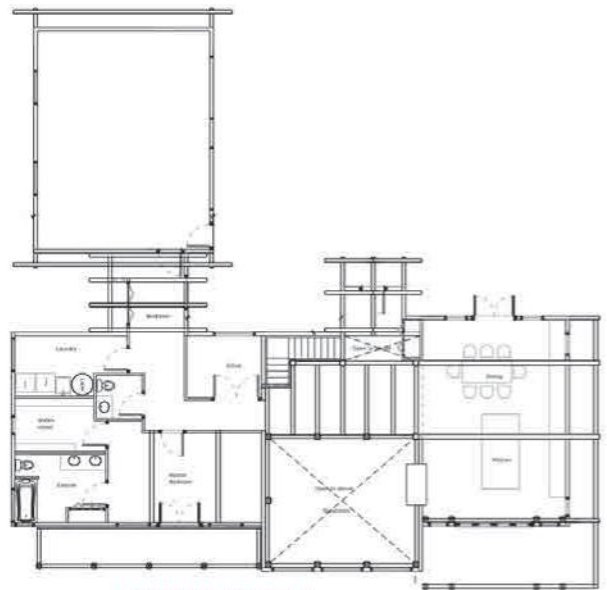
GARAGE
721 SQ FT



THE WEST COAST PACKAGE | A signature West Coast contemporary design, this modern hybrid timber frame home is as beautiful to look at as it is to live in. Employing a hybrid approach to this project, the structure is made of both conventional framing and timber framing. Most of the walls are conventional 2X6 framing, engineered to support the loads of a fully structured timber roof, with selected structural and cosmetic timber posts throughout. Blending our Pacific SmartWall® System in this house allows for a cost effective timber frame look with the energy efficiency of Pacific Smartwall® technology



MAIN FLOOR



UPPER FLOOR