



Pacific Homes

Building your trust. Building your dream home.



1 800 667 3511 | pacific-homes.com

BAKER Package

MAIN FLOOR
2,209 SQ FT

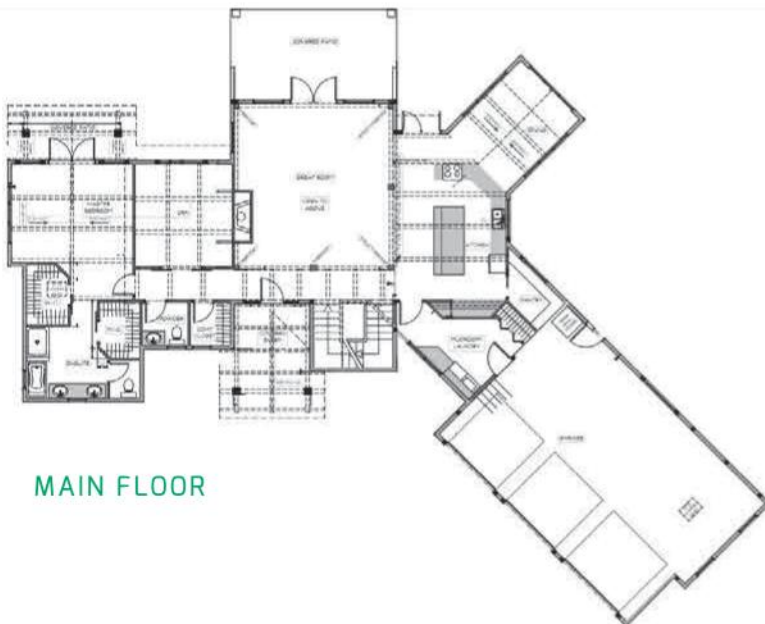
UPPER FLOOR
724 SQ FT

GARAGE
923 SQ FT

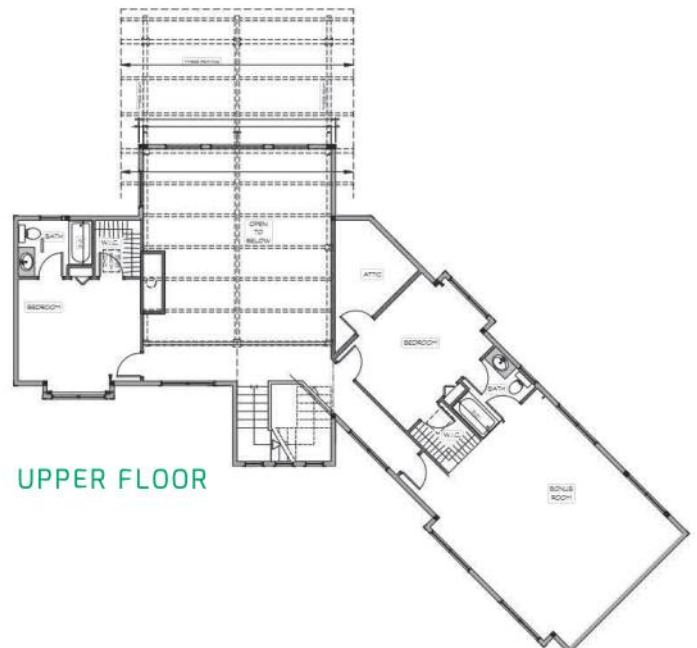
BONUS ROOM
493 SQ FT



THE BAKER PACKAGE | This classic hybrid timber frame design uses a system of hand cut West Coast Douglas fir timbers through the main areas of the house and our Pacific SmartWall® system everywhere else. The primary timber area is the great room with a two storey open space and a timber-supported vaulted roof. Semi-structural and cosmetic timber systems are also visible in the kitchen, dining room, den and master bedroom. Exterior details include a structural timber entry cover and a back patio cover, along with cosmetic gable truss detailing to make the timberframe look consistent around the house.



MAIN FLOOR



UPPER FLOOR