



# Pacific Homes

Building your trust. Building your dream home.

Custom Home and Cottage Packages

1-800-667-3511  
pacific-homes.com

## SHAWNIGAN Package

MAIN FLOOR  
1,643 SQ FT

UPPER FLOOR  
1491 SQ FT

GARAGE  
548 SQ FT

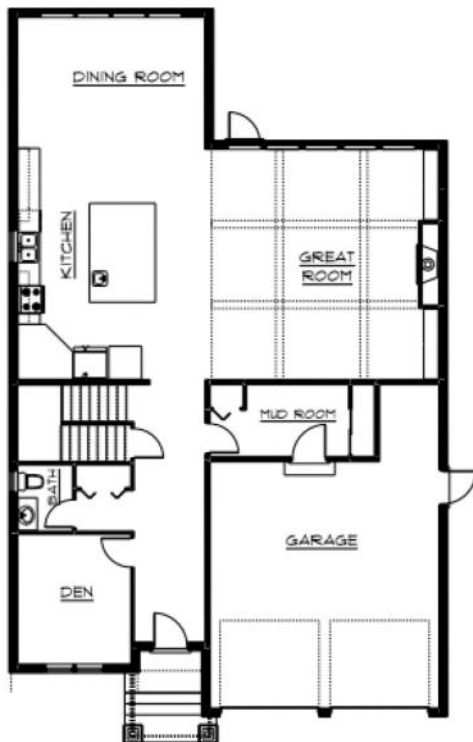
OPTIONAL  
BASEMENT:  
1533 SQ FT



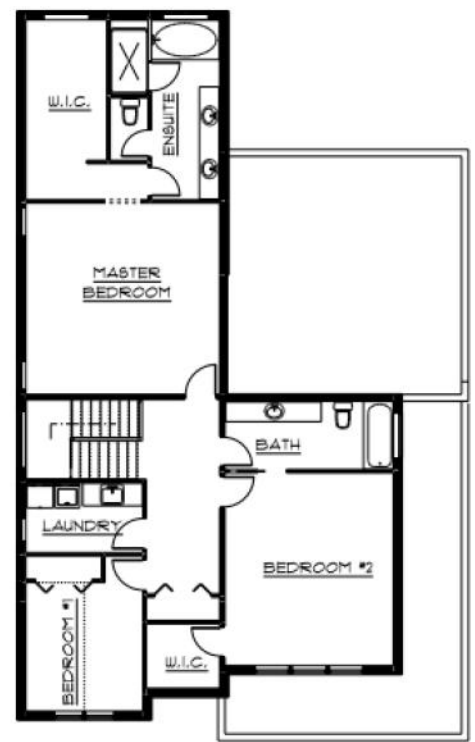
**THE SHAWNIGAN PACKAGE** | This efficient floor plan offers plenty of space and a great layout for entertaining. The kitchen and dining room merge together and are just steps away from the spacious great room with expansive 12' ceilings & decorative beams. Upstairs includes two bedrooms, bathroom, spacious laundry room, and a master suite which includes vaulted ceilings, large walk in closet, oversized jet tub, separate shower, and dual vanities.

**OPTIONAL** | The large basement offers an additional bedroom, home theatre, exercise room, and ample storage space.

MAIN FLOOR



UPPER FLOOR





MAIN FLOOR



UPPER FLOOR

