



Pacific Homes

Building your trust. Building your dream home.



1 800 667 3511 | pacific-homes.com

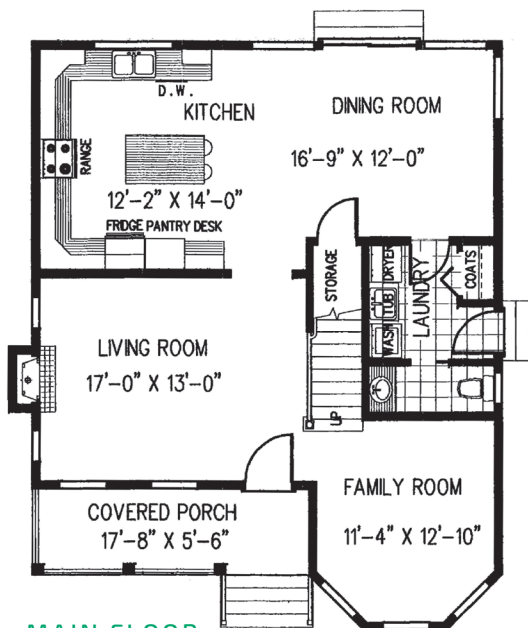
REVELSTOKE Package

MAIN FLOOR
957 SQ FT

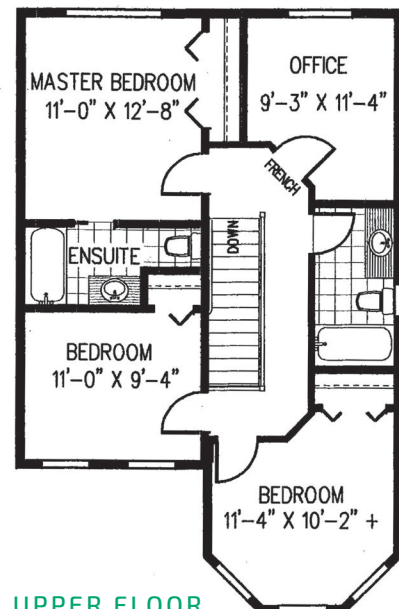
UPPER FLOOR
786 SQ FT



THE REVELSTOKE PACKAGE | This charming Victorian-inspired design features the charm and craftsmanship of the past as well as the conveniences of the modern era. Distinctive columns, eye-catching windows, and a varying roofline add character to the exterior, which is dominated by a welcoming covered porch. The first floor includes a large kitchen with central island, an open dining room, and a cozy living room with a fireplace. Other highlights include a laundry room, a home office and a big bay window that expands the family room. Upstairs are three spacious bedrooms and two bathrooms with the front facing bedroom also having a big bay window that's a perfect reading nook.



MAIN FLOOR



UPPER FLOOR