



Pacific Homes

Building your trust. Building your dream home.

Custom Home and
Cottage Packages

1-800-667-3511
pacific-homes.com

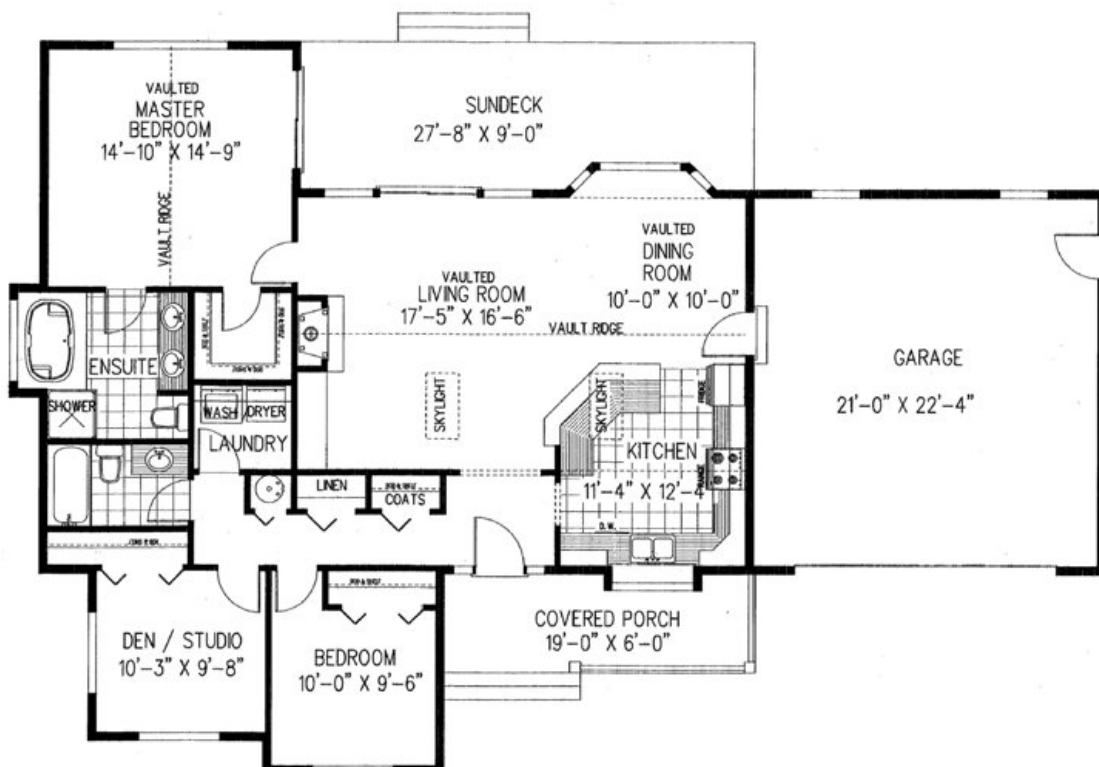
ALLIFORD Package

MAIN FLOOR
1,411 SQ FT

GARAGE
469 SQ FT

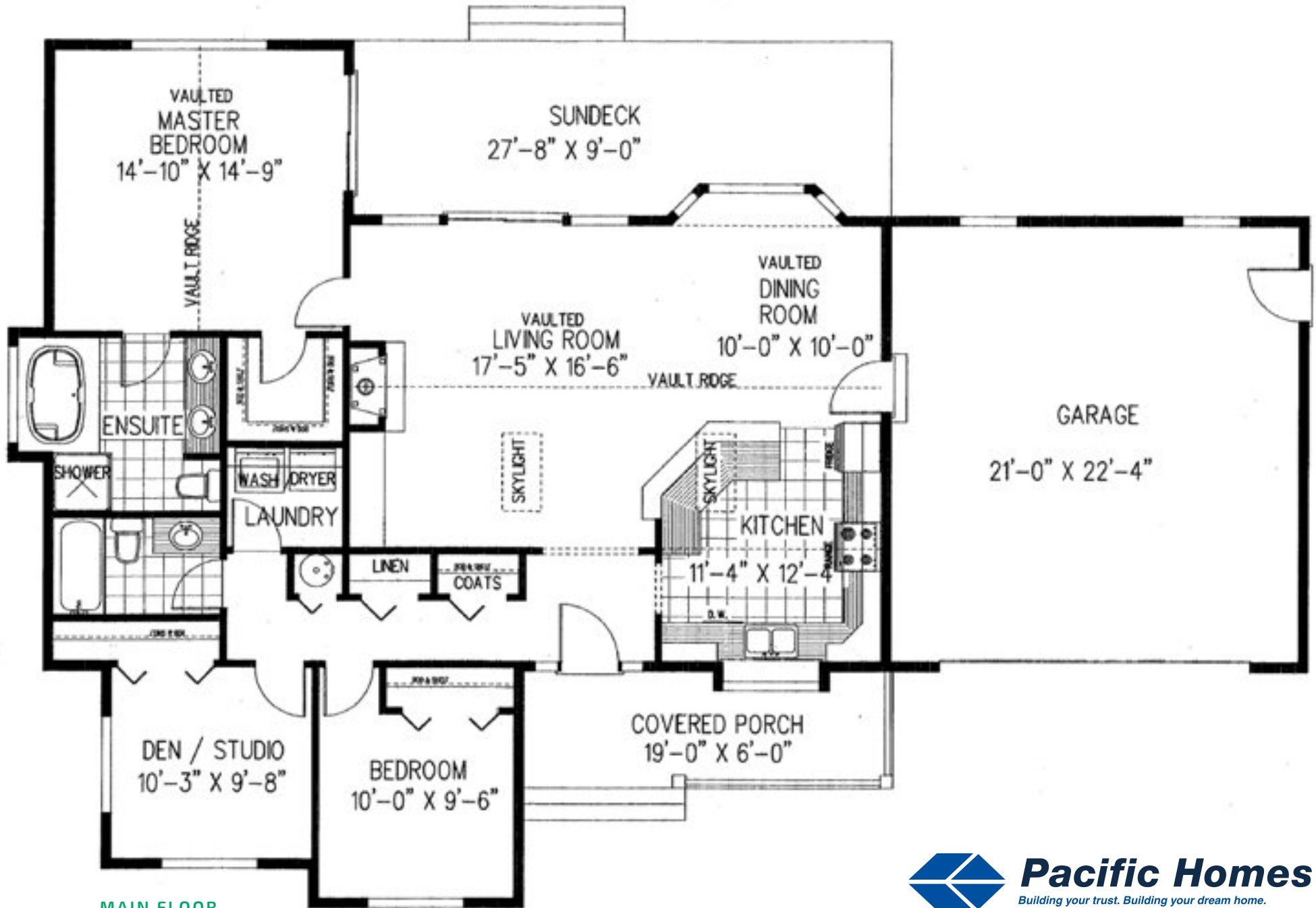


THE ALLIFORD PACKAGE | This efficient floor plan offers a genteel front porch for sitting out on warm nights. The expansive master suite includes vaulted ceilings, large his and her walk-in closets, an oversized jet tub, separate shower and dual vanities. The vaulted ceiling in the living room makes the home feel larger than it actually is. The open floorplan of this home includes a split-bedroom layout, and features a much-desired fireplace. Enjoy the spacious rear deck, perfect for those family barbeques. Large kitchen features popular raised bar for meals and conversations with family.



MAIN FLOOR

ALLIFORD Package



Pacific Homes

Building your trust. Building your dream home.